



**JOB SERVICE**  
M I D D L E E A S T

# DEFENSE BOXING BUSINESS

# CONTENTS

1. Industrial Packaging
2. Defense Crates
3. Testing Lab
4. Additional Services
5. Certifications
6. Contacts



Engineering company and an integrator of packaging solutions, specializing in the design, development, testing, manufacturing as well as the distribution of packaging materials.





# INDUSTRIAL PACKAGING

An engineering company and an integrator of packaging solutions.

Custom Crates, Boxes, Pallets, Skids, Steel Crates and Hard Cases.

Mobile and fixed-base assembly and packaging operations at customer locations.

# DEFENSE CRATES

Spare parts

Weapons

Mags

Ammunition

Reactive and EFP armor tiles

Engines

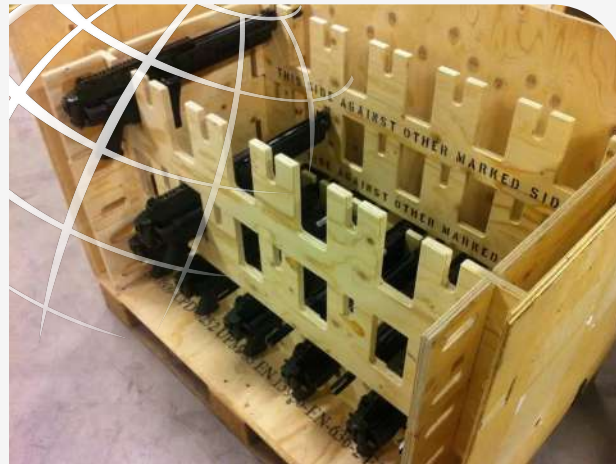
Fuel bladders

Submarine components

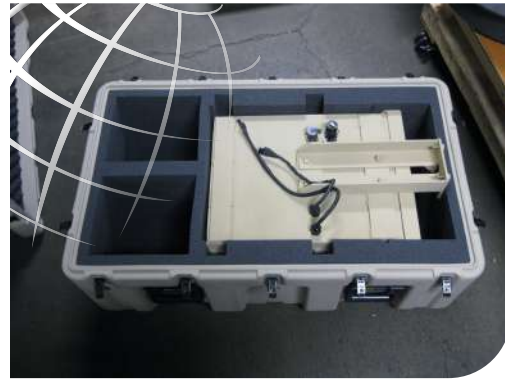
Helicopter components

Airplane components

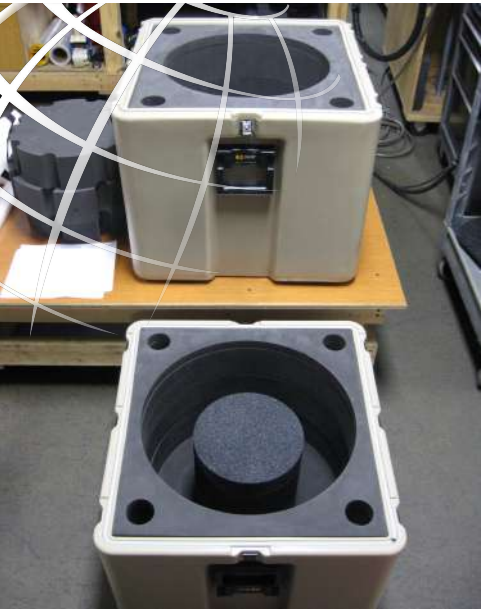
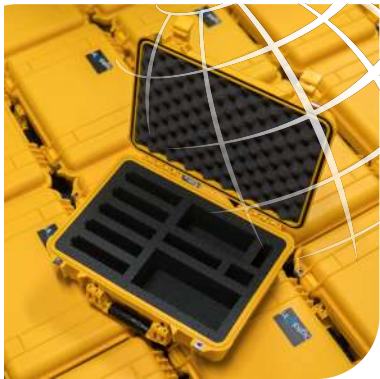
Tents



# DEFENSE CRATES



# DEFENSE CRATES



# DEFENSE CRATES

Access to Pelican Hardcases through Enwrap's partnership with UFP Industries.

Advanced hardcase solutions with customized protective packaging and containment materials.





# TESTING LAB

WE PROTECT YOUR BOTTOM LINE WHILE PROTECTING YOUR PRODUCTS

## TESTING SERVICES

- ISTA Certified Laboratory
  - 1 Series, 2C, 3ABEFK, 4AB, 6 Series
  - Specialize in 3B and 3E testing with our large equipment
  - Certified in Amazon 6 testing
- ASTM and ISO Pallet Testing
- Compression Testing
- Structural Analysis Testing
  - Crate Components
  - Lumber and other materials
- Customized Testing per customer need

## OTHER PACKAGING SERVICES

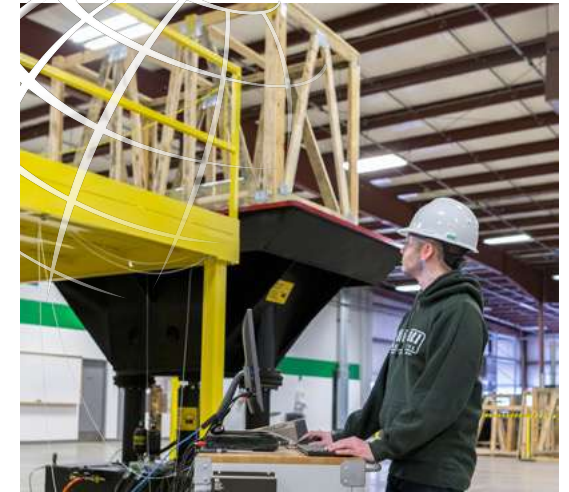
- Design Services
- Packaging Consulting
- Optimization Programs

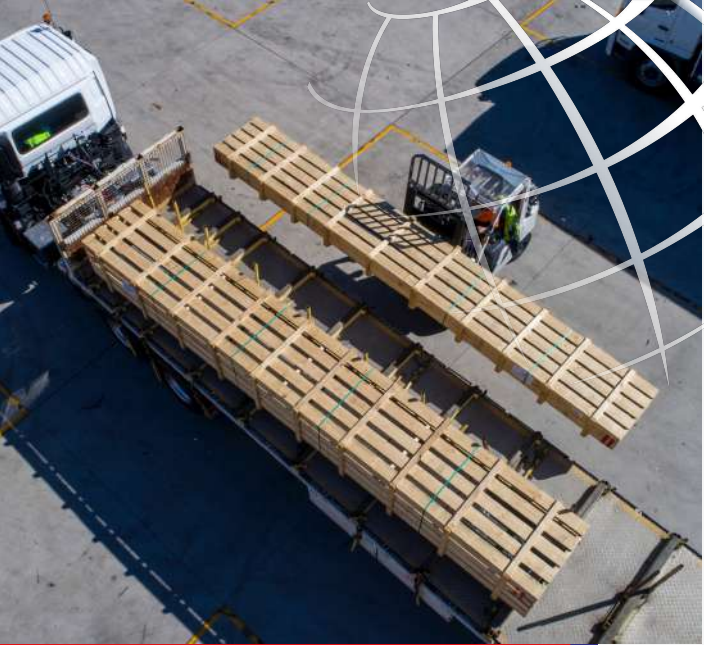
## EQUIPMENT

- Random Vertical Vibration Table, 6-ft x 10-ft (6,500 LBS)
- Compression Tester, 6-ft x 8-ft x 7ft, 65,000 lbs. max.compression strength
- Incline Impact Tester
- ISTA forklift handling course
- Forklift horizontal clamp tester
- Drop Tester, items 160 lbs. or less

## OTHER EQUIPMENT FOR CUSTOM NEEDS

- 3 Axis CNC Machine
- Cutting and Programming via RouterCIM
- Fabrication Shop
- New Product Development Lab





# ADDITIONAL SERVICES

---

Warehouse logistics

Warehousing

Logistics of products

Picking & Packing

Logistics management and transport analysis

Shipping optimization

# CERTIFICATIONS

Among the certification programs we recognize are the

- Sustainable Forestry Initiative (SFI)
- Canadian Standards Association (CSA)
- International Standards Organization (ISO 14001)
- Pan-European Forest Certification (PEFC) and other qualified organizations devoted to the sustainability of the world's forests, wildlife and watersheds.

Many of our facilities have Forest Stewardship Council® (FSC)® FSC-C004179 Chain of Custody Certification SCS-COC-001831.



JSME CERTIFICATIONS



Jebel Ali Free Zone ( South, Gate 12 )  
United Arab Emirates, Middle East

# CONTACTS

## Job Service ME

Phone: +971 4 884 4989

E-mail: [sales@jobserviceme.ae](mailto:sales@jobserviceme.ae)

[www.jsme.me](http://www.jsme.me)

